

Mounting rings KKT, KKL and KKU



KKT



KKU

The tight mounting ring KKT and the mounting ring KKL are designed for use with circular supply and exhaust valves in order to give a complete solution for various mounting options with circular spiral and flexible ducts. The gasket of KKT guarantees a tight installation. The model KKU without gasket is mounted on the duct fitting, e.g. when there is only little mounting space.

Product facts

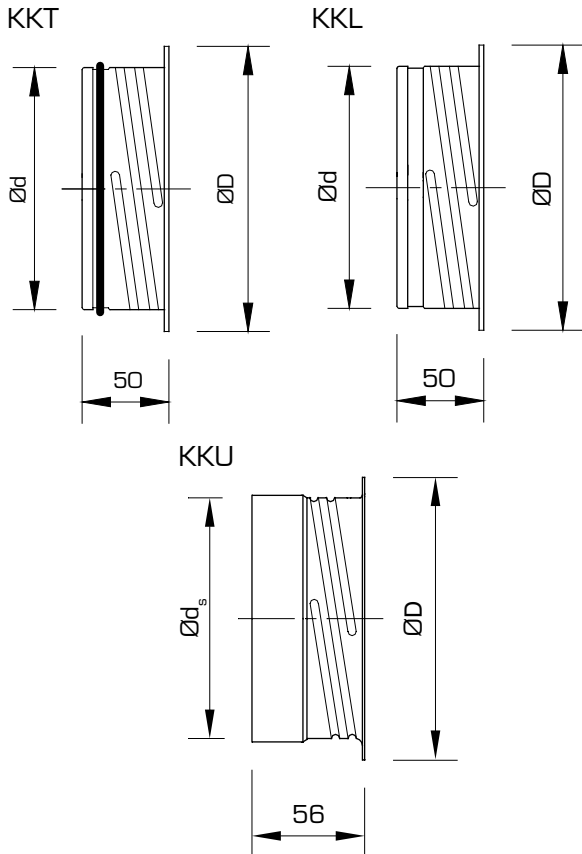
Mounting rings KKT, KKL and KKU

Fast and easy mounting
Manufactured from steel sheet.
Model KKT is supplied with rubber gasket

Product code example:
Mounting ring KKT-160

Dimensions, construction, installation, product code

Dimensions



Size	$\varnothing d$	$\varnothing D$	$\varnothing d_s$	Weight KKT (g)	Weight KKL/KKU (g)	Pack size
80	79	102	-	66	63	60
100	99	123	100	75	71	56
125	124	148	125	102	97	36
150	149	175	150	123	116	24
160	159	184	160	131	125	25
200	199	227	200	165	156	12

Construction

The mounting ring is made of steel sheet. Model KKT is supplied with rubber gasket.

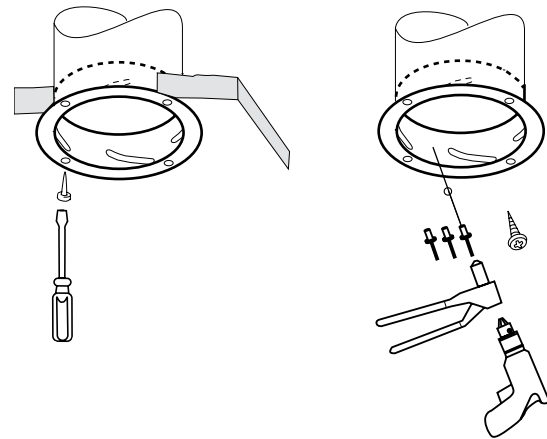
The rubber gasket and the construction of attaching the valve to mounting ring are patented.

Installation

KKT and KKL are designed for fast and easy mounting both with spiral and flexible ducting.

Mounting rings KKT and KKL are easy to install with rivets or screws into the duct. The gasket of KKT guarantees a tight installation of the ring in a circular duct. The model KKU is mounted on the duct fitting. Installation has to be secured with blind rivets.

The ring can be fastened to the surrounding material with screws which go through the openings in the ring flange.



Product code

Mounting ring with rubber gasket KKT-aaa

Size _____
80, 100, 125, 150, 160, 200

Mounting ring without rubber gasket KKL-aaa

Size _____
80, 100, 125, 150, 160, 200

Mounting ring without rubber gasket, mounted on the duct fitting KKU-aaa

Size _____
100, 125, 150, 160, 200